



Introducing Hybrid Exchange Management with MigrationWiz

About BitTitan

43K
CUSTOMERS

19M
USERS MIGRATED

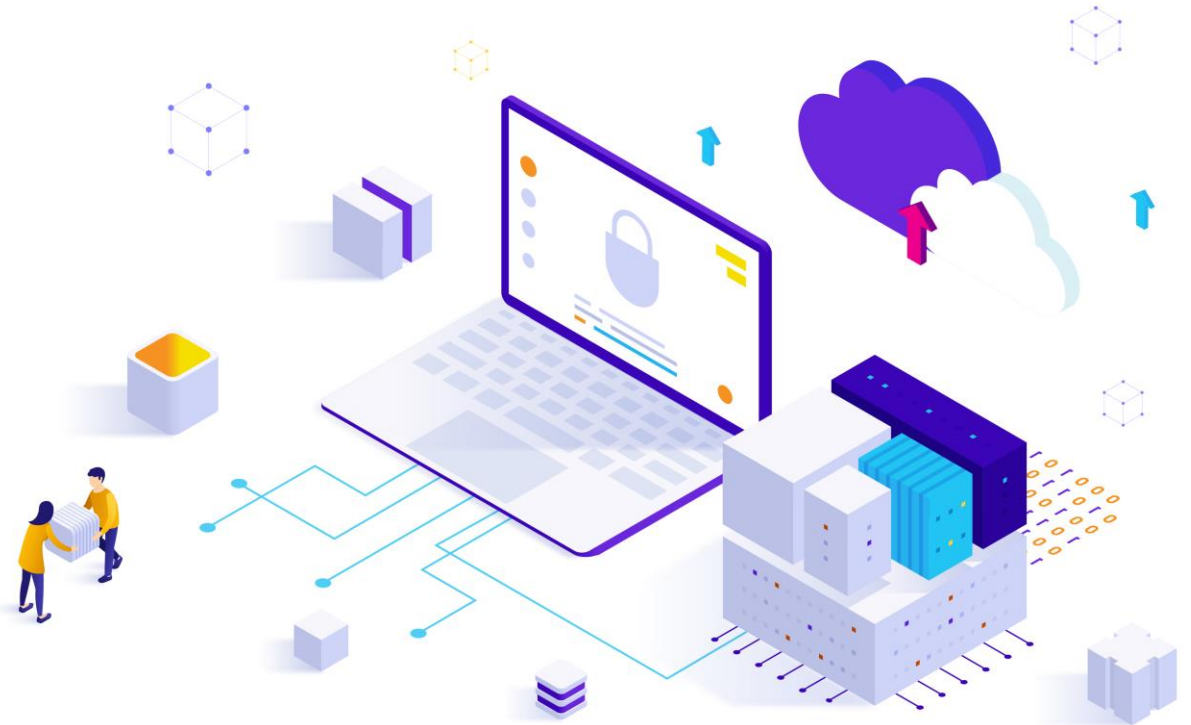
187
COUNTRIES

11 years ago we started building software to help IT services providers drive cloud adoption.

Today, our industry-leading platform helps IT professionals assess, deploy, and manage cloud solutions with greater profitability.

MigrationWiz® powers...

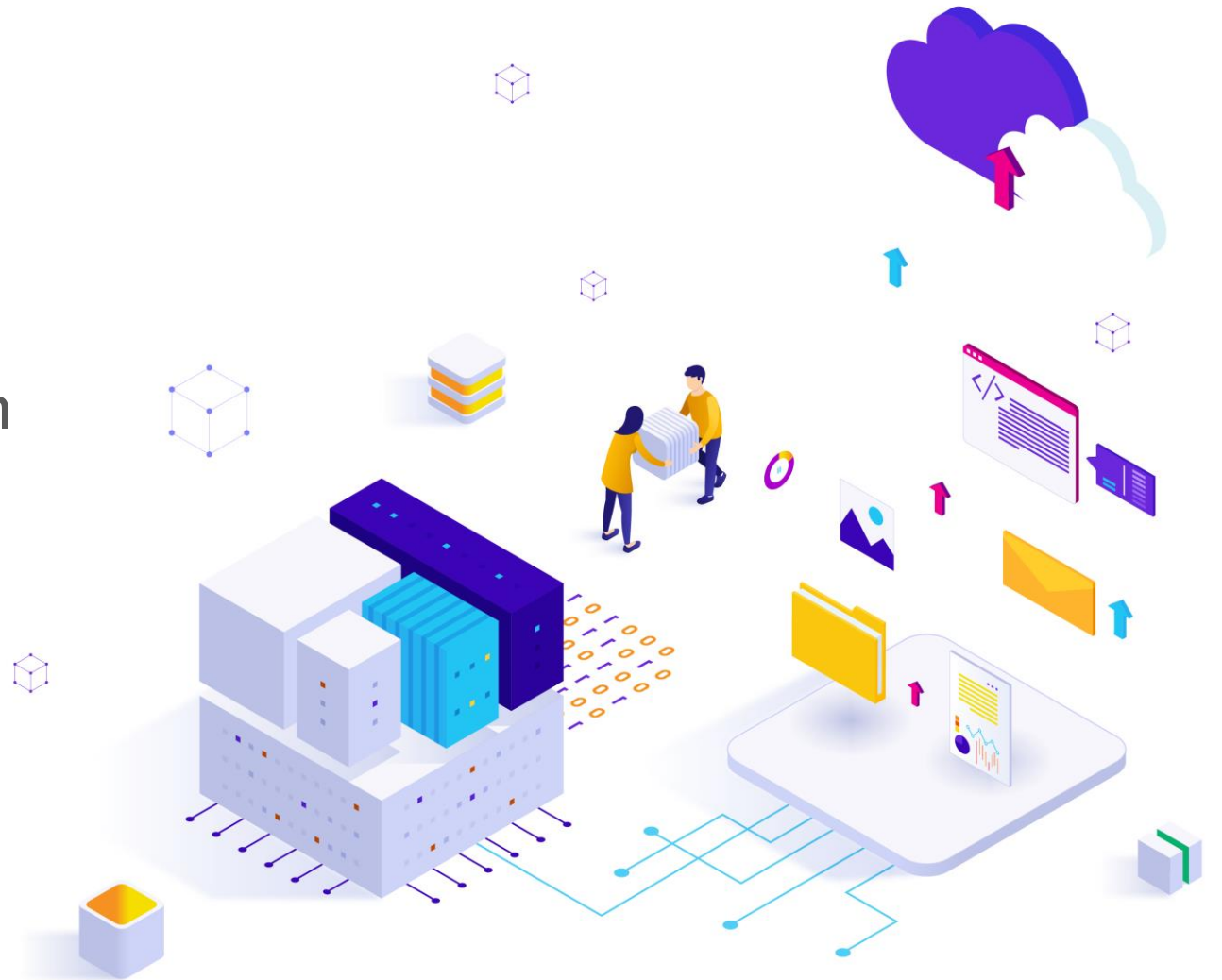
- ✓ Mail migration to Microsoft 365
- ✓ Documents migration to OneDrive and SharePoint
- ✓ Personal Archive migration to Microsoft 365
- ✓ Outlook profile configuration
- ✓ Microsoft Teams to Microsoft Teams migration



In This Webinar . . .

Agenda

1. Overview: Hybrid Exchange
2. Today's Pain Points
3. Hybrid Exchange Management with MigrationWiz
4. MigrationWiz Demo
5. Additional Resources



Speakers

Leading us through the hybrid experience



Jim Sivisay

BitTitan Product Manager



Mark Rochester

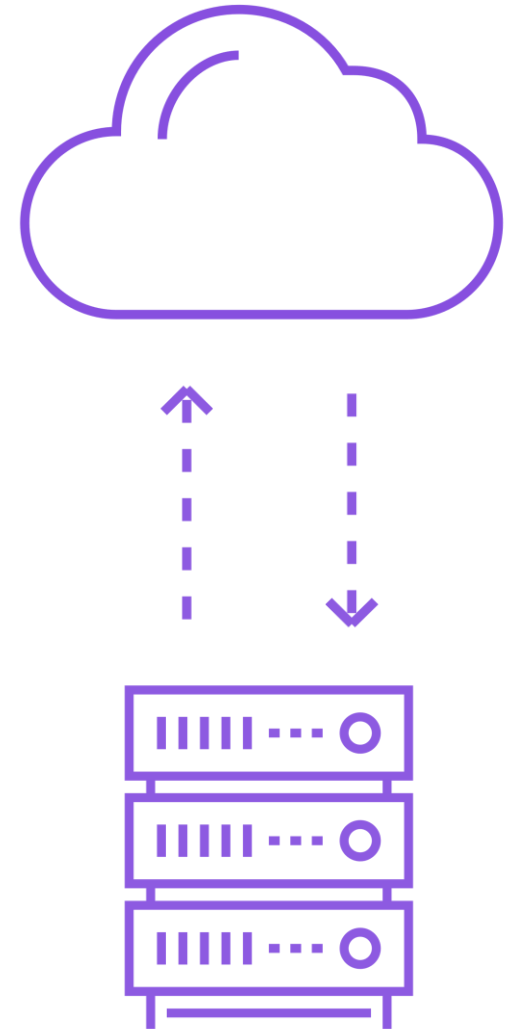
BitTitan Principal Product Architect

What is a Hybrid Exchange Deployment?

Overview

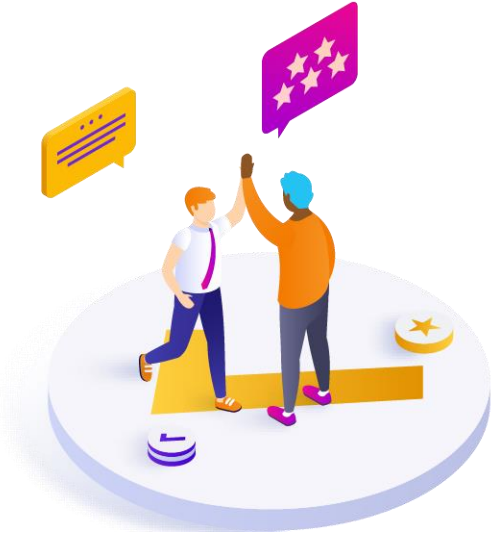
Users from the same organization are split between on-premises Exchange servers and Exchange Online.

- Central mail-flow, free/busy coexistence
- Shared domain namespace
- A unified global address list (GAL)/"shared address book"
- The look and feel of a single Exchange environment



Pre-Requisites for a Hybrid Migration

A fully operational hybrid environment! Exchange 2010 SP3+ -- Microsoft 365



Hybrid Configuration Wizard is completed

- Step-by-step setup of Hybrid Exchange Deployment
- Enables features like free/busy, mail-routing



Testing of that configuration is completed

- Endpoints are properly connected
- Single mailbox migrated using native toolset (optional)

Hybrid Migration Pain Points

What we're solving with MigrationWiz

Technical



Manual batch management



Reliance on scripts & spreadsheets

Business



Expensive IT resources



Poor hand-off to end-user



Technical Pain Points

Spreadsheets and scripting

Manual batch management

- Organizing, editing, and managing batches via CSVs.
- Difficult to identify delegate relationships and migrate together.

Custom scripts

- Helps with handling projects at this scale but increases complexity.
- Harder to standardize across projects.

Business Pain Points

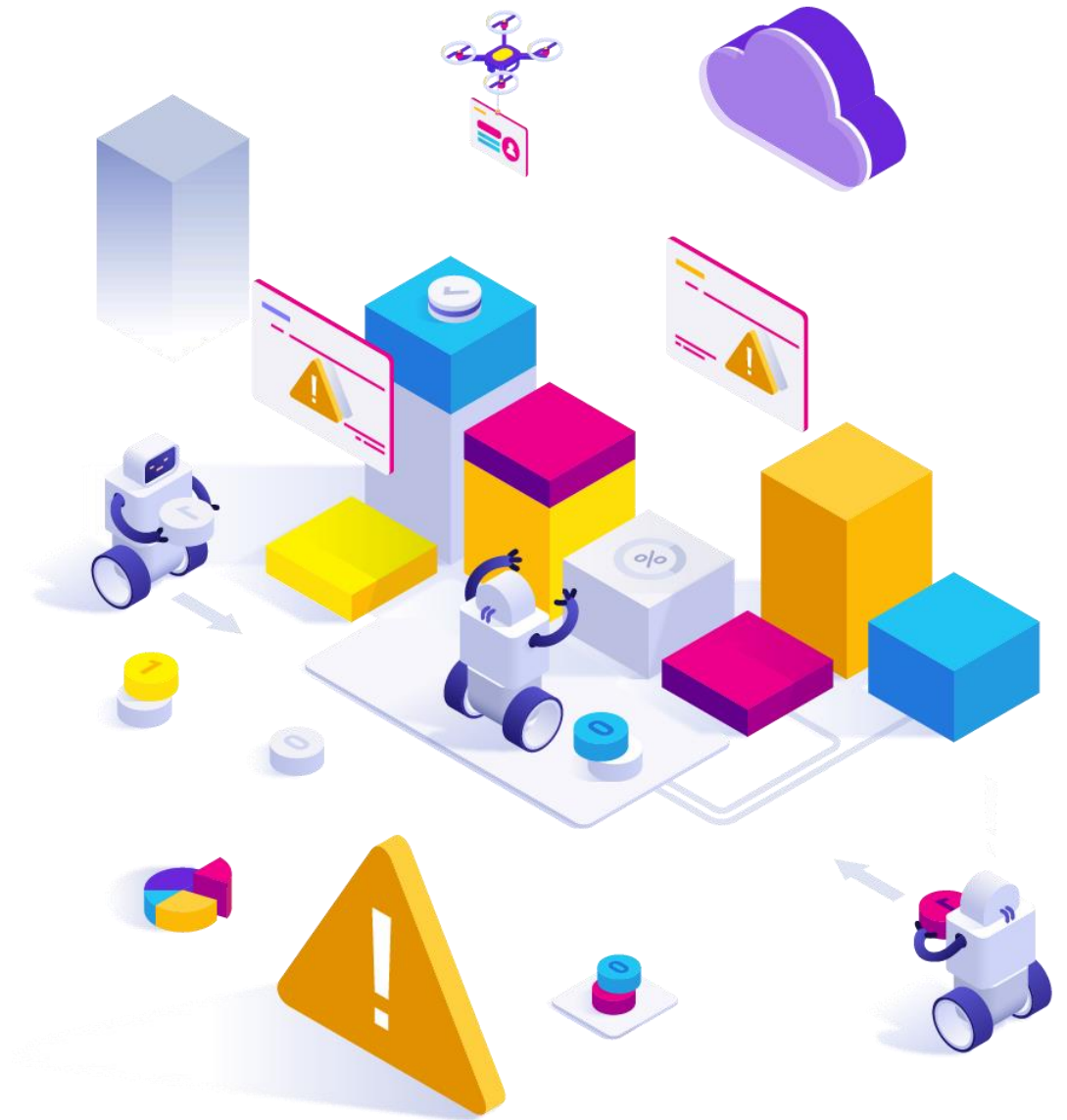
Resources and hand-off

Expensive IT resources

- Due to complexity, projects require hybrid consultants or higher-level technicians.

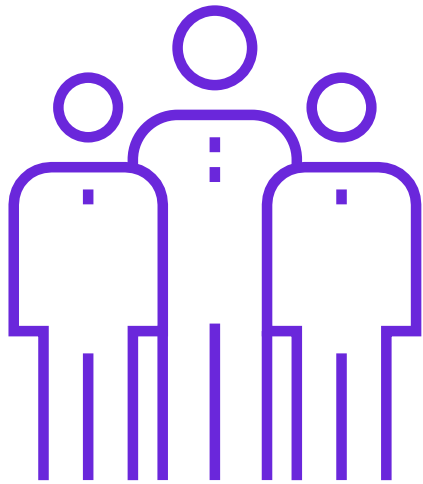
Poor transition to end-user

- Internal IT teams often struggle to migrate subsequent batches after consultants exit the project.

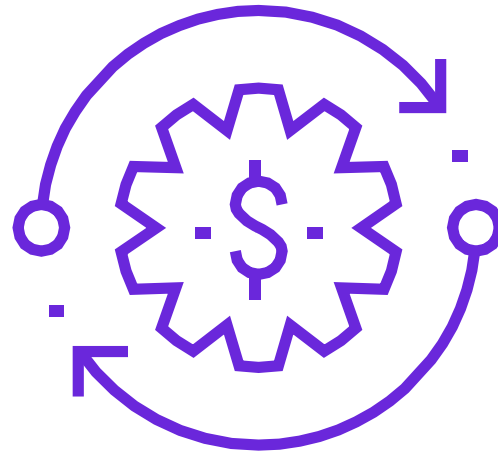


Hybrid Exchange Management with MigrationWiz

What's the difference?



Improve batch management



Reduce project resources



Simplify hand-off to end-user

Improve Batch Management

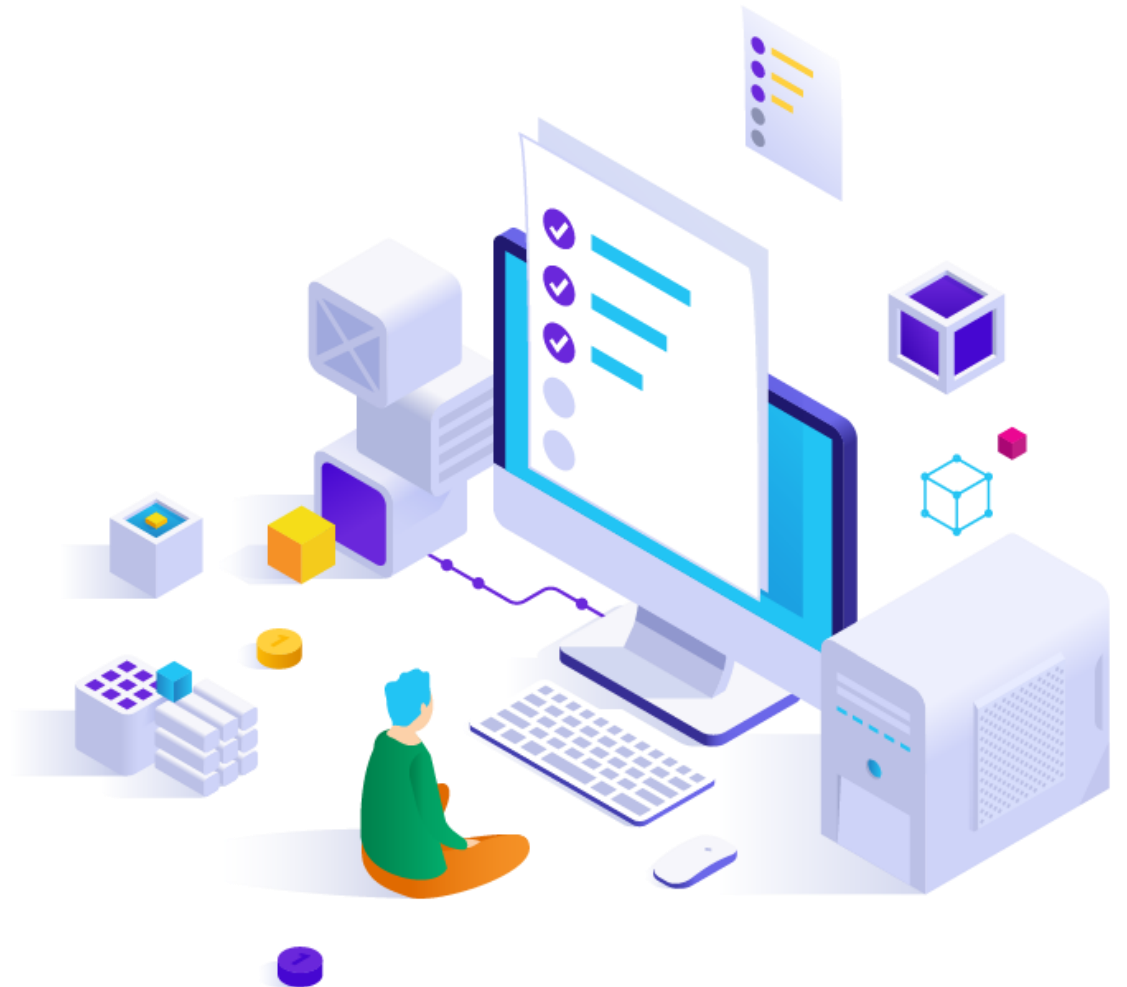
Goodbye spreadsheets

Automate discovery, batching

- Identify mailboxes and batch by specific Organizational Unit (OU).
- Add, edit, manage, and sync batches from single UI.

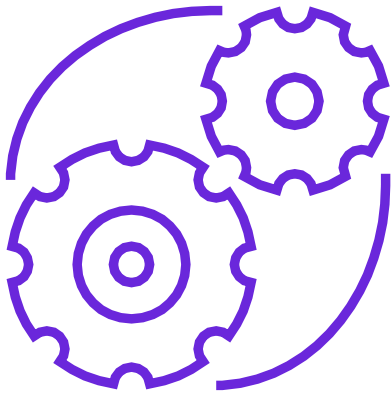
Analyze delegates

- Validate and lock delegates together to preserve permissions.
- Keep delegates together when moving users between batches.

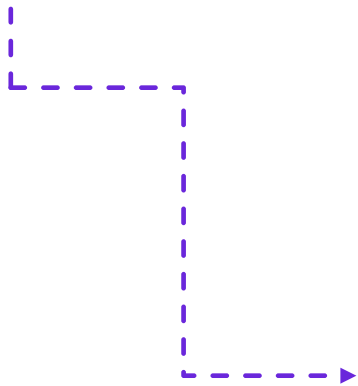


Reduce Project Resources

Save time and free up people



- **Time:** Users, delegates, and batches are created through agented discovery or auto-generated CSV.
- **Money:** Internal IT can manage subsequent batches themselves to limit project costs.



- Top-tier IT resources are free!
- Simple process with less custom scripting.
- Partner margins can grow.

Simplify Hand-Off

Set up internal IT

- With MigrationWiz, internal IT can manage their own hybrid migrations long-term.
- **Before:** Internal IT inherited scripts and spreadsheets for future batches and was told “good luck.”
- **Now:** Partner leaves behind an easy-to-use platform for IT to migrate themselves.

Partner benefits:

- Reduces total cost of the project bid to end-user while preserving partner margin.
- Standardize across projects.

End-user benefits:

- They pay less to the partner for the project.
- Internal IT has an effective way to manage their own batches and move at their own pace.

Architecture Overview

MigrationWiz sits on Top of Existing Microsoft Platform

MigrationWiz

On-prem Exchange Organization

Pre-migration

Post-migration

Microsoft 365

Batch Management

Users, contacts, & groups via AADC

Microsoft 365

Active Directory synchronization

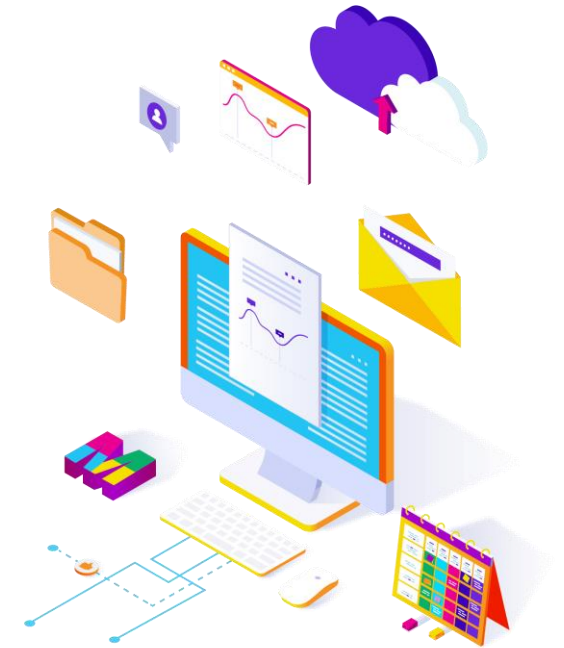
Secure mail flow

Sharing (free/busy, Mail Tips, archive, etc.)

Exchange

Client access and mailbox server

Mailbox data via Mailbox Replication Service (MRS)



Demo

Hybrid Exchange Management



Additional Hybrid Resources

Learn more: Links

- [Website: Hybrid Exchange Management](#)
- [Blog: Hybrid Exchange Management with MigrationWiz](#)
- [Help Center: Hybrid Exchange Migration Guide](#)





Start migrating today!

Purchase MigrationWiz directly at [BitTitan.com](https://www.bitTitan.com) or through your Preferred Distributor

